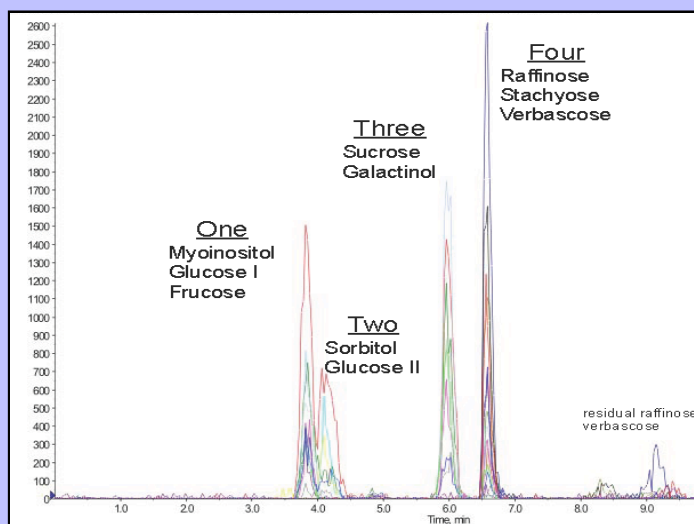


Can Your Proteomics Column Retain Polar Analytes?

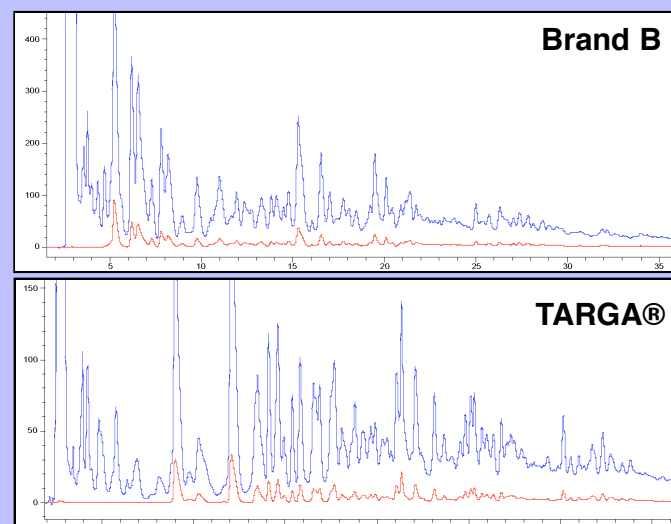
Increased Resolution of Hydrophilic Analytes on TARGA C18

RPC Separation of Saccharides



Column: TARGA C18, p/n: H TS-2546-C185
Flow Rate: 1mL/min
Solvent: 100% water. Detection: LC-MS

Increased Separation of Polar Peptides



Column: TARGA C18, p/n: H TS-2546-C185
Flow Rate: 1mL/min
Gradient: 100% water, 0.1% FA to 60% ACN

Load Samples in 100% water
Retain Polar Analytes for Increased Resolution
10X Faster Equilibration in 100% Water for Shorter Cycle Times