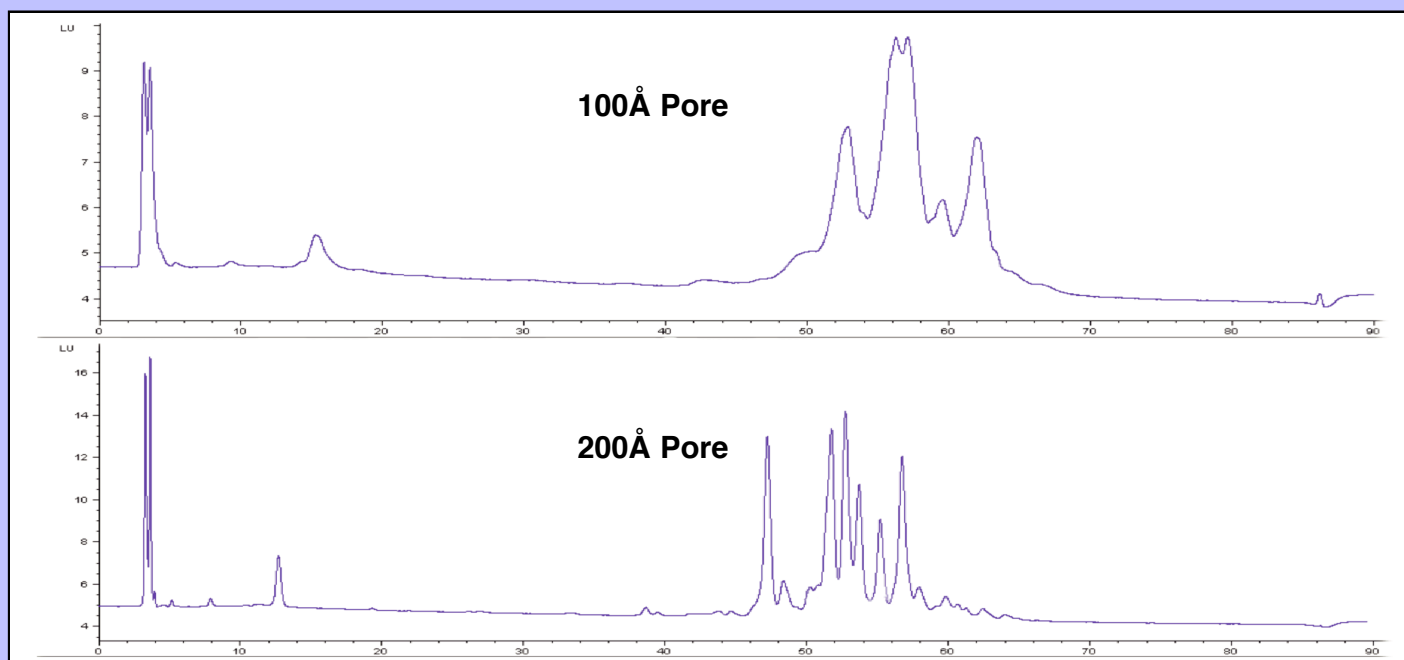


# Effect of Larger Pore Size On HILIC Separations of Neutral and Acidic Glycans

## Increased Resolution of Complex Glycans With 200Å Pore HILIC Media



Sample: 2AB labeled N-Glycans  
Column: ZIC-HILIC, 4.6 x 150mm  
Gradient: 80% to 65% ACN, 50mM ammonium acetate, pH 7

Volatile HILIC Conditions Increases MS Detection  
eHILIC of Derivatized Sialylated Complex Glycans