

## HPLC Columns

### Wide Range of Stainless Steel HPLC COLUMNS



### Widest Range of Hardware Types and Sizes Available Anywhere

Higgins Analytical manufactures the widest range of column formats in the widest range of hardware types available anywhere. Conventional HPLC columns are offered in stainless steel hardware. Frit materials include stainless steel, Carpenter C, titanium. Standard lengths range from 3.3cm to 25 cm. Custom columns are routinely manufactured in odd length ranging from 3.3 to 50cm. The internal diameters of our entire HPLC column and cartridge offering range from 75µm to 20mm, over two orders of magnitude.

### Guide to Some Standard HPLC Column Part Numbers

xS-xxxx-xxxx	Stainless Steel (ss) column	
xP-xxxx-xxxx	PEEK column	
xS-03xx-xxxx	3.5cm ss column	Shortest standard size
xS-25xx-xxxx	25cm ss column	Longest standard size
xP-05xx-xxxx	5cm PEEK column	Shortest standard size
xP-25xx-xxxx	25cm PEEK column	Longest standard size
xS-xx21-xxxx	2.1mm ss I.D.	Smallest standard I.D.
xP-xx21-xxxx	2.1mm PEEK I.D.	Smallest standard I.D.
xS-xx46-xxxx	4.6mm ss I.D.	Popular standard I.D.
xP-xx46-xxxx	4.6mm PEEK I.D.	Popular standard I.D.

See Page 23 for complete Part Number information

## CLIQUEUS Analytical Columns - Stainless Steel



<b>CLIQUEUS C8 5µm</b>		<b>4.6, 4.0, 3.0, and 2.1mm I.D. s.s. columns</b>							
30x4.6mm		50x4.6mm		100x4.6mm		150x4.6mm		250x4.6mm	
CS-0346-C085	\$330	CS-0546-C085	\$340	CS-1046-C085	\$350	CS-1546-C085	\$390	CS-2546-C085	\$420
30x4.0mm		50x4.0mm		100x4.0mm		150x4.0mm		250x4.0mm	
CS-0340-C085	\$330	CS-0540-C085	\$340	CS-1040-C085	\$350	CS-1540-C085	\$390	CS-2540-C085	\$420
30x3.0mm		50x3.0mm		100x3.0mm		150x3.0mm		250x3.0mm	
CS-0330-C085	\$330	CS-0530-C085	\$340	CS-1030-C085	\$350	CS-1530-C085	\$390	CS-2530-C085	\$420
30x2.1mm		50x2.1mm		100x2.1mm		150x2.1mm		250x2.1mm	
CS-0321-C085	\$330	CS-0521-C085	\$340	CS-1021-C085	\$350	CS-1521-C085	\$390	CS-2521-C085	\$420
<b>CLIQUEUS C18 10µm</b>		<b>4.6mm I.D. s.s. columns</b>							
30x4.6mm		50x4.6mm		100x4.6mm		150x4.6mm		250x4.6mm	
CS-0346-C181	\$290	CS-0546-C181	\$300	CS-1046-C181	\$320	CS-1546-C181	\$360	CS-2546-C181	\$390
<b>CLIQUEUS C18 5µm</b>		<b>4.6, 4.0, 3.0, and 2.1mm I.D. s.s. columns</b>							
30x4.6mm		50x4.6mm		100x4.6mm		150x4.6mm		250x4.6mm	
CS-0346-C185	\$330	CS-0546-C185	\$340	CS-1046-C185	\$350	CS-1546-C185	\$390	CS-2546-C185	\$420
30x4.0mm		50x4.0mm		100x4.0mm		150x4.0mm		250x4.0mm	
CS-0340-C185	\$330	CS-0540-C185	\$340	CS-1040-C185	\$350	CS-1540-C185	\$390	CS-2540-C185	\$420
30x3.0mm		50x3.0mm		100x3.0mm		150x3.0mm		250x3.0mm	
CS-0330-C185	\$330	CS-0530-C185	\$340	CS-1030-C185	\$350	CS-1530-C185	\$390	CS-2530-C185	\$420
30x2.1mm		50x2.1mm		100x2.1mm		150x2.1mm		250x2.1mm	
CS-0321-C185	\$330	CS-0521-C185	\$340	CS-1021-C185	\$350	CS-1521-C185	\$390	CS-2521-C185	\$420



## CLIQUEUS Analytical Columns - Stainless Steel



<b>CLIQUEUS Cyano 5µm</b>		<b>4.6, 4.0, 3.0, and 2.1mm I.D. s.s. columns</b>							
30x4.6mm		50x4.6mm		100x4.6mm		150x4.6mm		250x4.6mm	
CS-0346-CNP5	\$340	CS-0546-CNP5	\$350	CS-1046-CNP5	\$360	CS-1546-CNP5	\$410	CS-2546-CNP5	\$430
30x4.0mm		50x4.0mm		100x4.0mm		150x4.0mm		250x4.0mm	
CS-0340-CNP5	\$340	CS-0540-CNP5	\$350	CS-1040-CNP5	\$360	CS-1540-CNP5	\$410	CS-2540-CNP5	\$430
30x3.0mm		50x3.0mm		100x3.0mm		150x3.0mm		250x3.0mm	
CS-0330-CNP5	\$340	CS-0530-CNP5	\$350	CS-1030-CNP5	\$360	CS-1530-CNP5	\$410	CS-2530-CP5	\$430
30x2.1mm		50x2.1mm		100x2.1mm		150x2.1mm		250x2.1mm	
CS-0321-CNP5	\$340	CS-0521-CNP5	\$350	CS-1021-CNP5	\$360	CS-1521-CNP5	\$410	CS-2521-CNP5	\$430

<b>CLIQUEUS Phenyl 5µm</b>		<b>4.6, 4.0, 3.0, and 2.1mm I.D. s.s. columns</b>							
30x4.6mm		50x4.6mm		100x4.6mm		150x4.6mm		250x4.6mm	
CS-0346-PHN5	\$340	CS-0546-PHN5	\$350	CS-1046-PHN5	\$360	CS-1546-PHN5	\$410	CS-2546-PHN5	\$430
30x4.0mm		50x4.0mm		100x4.0mm		150x4.0mm		250x4.0mm	
CS-0340-PHN5	\$340	CS-0540-PHN5	\$350	CS-1040-PHN5	\$360	CS-1540-PHN5	\$410	CS-2540-PHN5	\$430
30x3.0mm		50x3.0mm		100x3.0mm		150x3.0mm		250x3.0mm	
CS-0330-PHN5	\$340	CS-0530-PHN5	\$350	CS-1030-PHN5	\$360	CS-1530-PHN5	\$410	CS-2530-PHN5	\$430
30x2.1mm		50x2.1mm		100x2.1mm		150x2.1mm		250x2.1mm	
CS-0321-PHN5	\$340	CS-0521-PHN5	\$350	CS-1021-PHN5	\$360	CS-1521-PHN5	\$410	CS-2521-PHN5	\$430

<b>CLIQUEUS Silica 5µm</b>		<b>4.6, 4.0, 3.0, and 2.1mm I.D. s.s. columns</b>							
30x4.6mm		50x4.6mm		100x4.6mm		150x4.6mm		250x4.6mm	
CS-0346-SIL5	\$290	CS-0546-SIL5	\$290	CS-1046-SIL5	\$320	CS-1546-SIL5	\$360	CS-2546-SIL5	\$380
30x4.0mm		50x4.0mm		100x4.0mm		150x4.0mm		250x4.0mm	
CS-0340-SIL5	\$290	CS-0540-SIL5	\$290	CS-1040-SIL5	\$320	CS-1540-SIL5	\$360	CS-2540-SIL5	\$380
30x3.0mm		50x3.0mm		100x3.0mm		150x3.0mm		250x3.0mm	
CS-0330-SIL5	\$290	CS-0530-SIL5	\$290	CS-1030-SIL5	\$320	CS-1530-SIL5	\$360	CS-2530-SIL5	\$380
30x2.1mm		50x2.1mm		100x2.1mm		150x2.1mm		250x2.1mm	
CS-0321-SIL5	\$290	CS-0521-SIL5	\$290	CS-1021-SIL5	\$320	CS-1521-SIL5	\$360	CS-2521-SIL5	\$380

## HASIL 100 Analytical Columns - Stainless Steel



<b>HASIL 100 C8 5µm</b>		<b>4.6, 4.0, 3.0, and 2.1mm I.D. s.s. columns</b>							
30x4.6mm		50x4.6mm		100x4.6mm		150x4.6mm		250x4.6mm	
HS-0346-M085	\$330	HS-0546-M085	\$340	HS-1046-M085	\$350	HS-1546-M085	\$390	HS-2546-M085	\$420
30x4.0mm		50x4.0mm		100x4.0mm		150x4.0mm		250x4.0mm	
HS-0340-M085	\$330	HS-0540-M085	\$340	HS-1040-M085	\$350	HS-1540-M085	\$390	HS-2540-M085	\$420
30x3.0mm		50x3.0mm		100x3.0mm		150x3.0mm		250x3.0mm	
HS-0330-M085	\$330	HS-0530-M085	\$340	HS-1030-M085	\$350	HS-1530-M085	\$390	HS-2530-M085	\$420
30x2.1mm		50x2.1mm		100x2.1mm		150x2.1mm		250x2.1mm	
HS-0321-M085	\$330	HS-0521-M085	\$340	HS-1021-M085	\$350	HS-1521-M085	\$390	HS-2521-M085	\$420

<b>HASIL 100 C18 5µm</b>		<b>4.6, 4.0, 3.0, and 2.1mm I.D. s.s. columns</b>							
30x4.6mm		50x4.6mm		100x4.6mm		150x4.6mm		250x4.6mm	
HS-0346-M185	\$330	HS-0546-M185	\$340	HS-1046-M185	\$350	HS-1546-M185	\$390	HS-2546-M185	\$420
30x4.0mm		50x4.0mm		100x4.0mm		150x4.0mm		250x4.0mm	
HS-0340-M185	\$330	HS-0540-M185	\$340	HS-1040-M185	\$350	HS-1540-M185	\$390	HS-2540-M185	\$420
30x3.0mm		50x3.0mm		100x3.0mm		150x3.0mm		250x3.0mm	
HS-0330-M185	\$330	HS-0530-M185	\$340	HS-1030-M185	\$350	HS-1530-M185	\$390	HS-2530-M185	\$420
30x2.1mm		50x2.1mm		100x2.1mm		150x2.1mm		250x2.1mm	
HS-0321-M185	\$330	HS-0521-M185	\$340	HS-1021-M185	\$350	HS-1521-M185	\$390	HS-2521-M185	\$420



## HPLC Columns (continued)

Wide Range of Stainless Steel HPLC COLUMNS



### HAISIL100 Analytical Columns - Stainless Steel (cont.)



HAISIL 100 Silica 5µm		4.6, 4.0, 3.0, and 2.1mm I.D. s.s. columns							
30x4.6mm		50x4.6mm		100x4.6mm		150x4.6mm		250x4.6mm	
HS-0346-SIL5	\$290	HS-0546-SIL5	\$290	HS-1046-SIL5	\$300	HS-1546-SIL5	\$360	HS-2546-SIL5	\$380
30x4.0mm		50x4.0mm		100x4.0mm		150x4.0mm		250x4.0mm	
HS-0340-SIL5	\$290	HS-0540-SIL5	\$290	HS-1040-SIL5	\$300	HS-1540-SIL5	\$360	HS-2540-SIL5	\$380
30x3.0mm		50x3.0mm		100x3.0mm		150x3.0mm		250x3.0mm	
HS-0330-SIL5	\$290	HS-0530-SIL5	\$290	HS-1030-SIL5	\$300	HS-1530-SIL5	\$360	HS-2530-SIL5	\$380
30x2.1mm		50x2.1mm		100x2.1mm		150x2.1mm		250x2.1mm	
HS-0321-SIL5	\$290	HS-0521-SIL5	\$290	HS-1021-SIL5	\$300	HS-1521-SIL5	\$360	HS-2521-SIL5	\$380

### HAISIL300 Analytical Columns - Stainless Steel



HAISIL 300 C18 5µm		4.6, 4.0, 3.0, and 2.1mm I.D. s.s. columns							
30x4.6mm		50x4.6mm		100x4.6mm		150x4.6mm		250x4.6mm	
HS-0346-W185	\$370	HS-0546-W185	\$390	HS-1046-W185	\$420	HS-1546-W185	\$450	HS-2546-W185	\$480
30x4.0mm		50x4.0mm		100x4.0mm		150x4.0mm		250x4.0mm	
HS-0340-W185	\$370	HS-0540-W185	\$390	HS-1040-W185	\$420	HS-1540-W185	\$450	HS-2540-W185	\$480
30x3.0mm		50x3.0mm		100x3.0mm		150x3.0mm		250x3.0mm	
HS-0330-W185	\$370	HS-0530-W185	\$390	HS-1030-W185	\$420	HS-1530-W185	\$450	HS-2530-W185	\$480
30x2.1mm		50x2.1mm		100x2.1mm		150x2.1mm		250x2.1mm	
HS-0321-W185	\$370	HS-0521-W185	\$390	HS-1021-W185	\$420	HS-1521-W185	\$450	HS-2521-W185	\$480

### HAISIL HL Analytical Columns - Stainless Steel



HAISIL HL C18 5µm		4.6, 4.0, 3.0, and 2.1mm I.D. s.s. columns							
30x4.6mm		50x4.6mm		100x4.6mm		150x4.6mm		250x4.6mm	
LS-0346-C185	\$460	LS-0546-C185	\$470	LS-1046-C185	\$480	LS-1546-C185	\$500	LS-2546-C185	\$530
30x4.0mm		50x4.0mm		100x4.0mm		150x4.0mm		250x4.0mm	
LS-0340-C185	\$460	LS-0540-C185	\$470	LS-1040-C185	\$480	LS-1540-C185	\$500	LS-2540-C185	\$530
30x3.0mm		50x3.0mm		100x3.0mm		150x3.0mm		250x3.0mm	
LS-0330-C185	\$460	LS-0530-C185	\$470	LS-1030-C185	\$480	LS-1530-C185	\$500	LS-2530-C185	\$530
30x2.1mm		50x2.1mm		100x2.1mm		150x2.1mm		250x2.1mm	
LS-0321-C185	\$460	LS-0521-C185	\$470	LS-1021-C185	\$480	LS-1521-C185	\$500	LS-2521-C185	\$530





See pages 62 - 63 for information on the wide variety of Guard Cartridges available for these Analytical Columns

## PROTO 200 Analytical Columns - Stainless Steel

200

<b>PROTO 200 C4 5µm</b>		<b>4.6, 4.0, 3.0, and 2.1mm I.D. s.s. columns</b>							
30x4.6mm		50x4.6mm		100x4.6mm		150x4.6mm		250x4.6mm	
RS-0346-D045	\$370	RS-0546-D045	\$390	RS-1046-D045	\$420	RS-1546-D045	\$450	RS-2546-D045	\$480
30x4.0mm		50x4.0mm		100x4.0mm		150x4.0mm		250x4.0mm	
RS-0340-D045	\$370	RS-0540-D045	\$390	RS-1040-D045	\$420	RS-1540-D045	\$450	RS-2540-D045	\$480
30x3.0mm		50x3.0mm		100x3.0mm		150x3.0mm		250x3.0mm	
RS-0330-D045	\$370	RS-0530-D045	\$390	RS-1030-D045	\$420	RS-1530-D045	\$450	RS-2530-D045	\$480
30x2.1mm		50x2.1mm		100x2.1mm		150x2.1mm		250x2.1mm	
RS-0321-D045	\$370	RS-0521-D045	\$390	RS-1021-D045	\$420	RS-1521-D045	\$450	RS-2521-D045	\$480

<b>PROTO 200 C18 5µm</b>		<b>4.6, 4.0, 3.0, and 2.1mm I.D. s.s. columns</b>							
30x4.6mm		50x4.6mm		100x4.6mm		150x4.6mm		250x4.6mm	
RS-0346-D185	\$370	RS-0546-D185	\$390	RS-1046-D185	\$420	RS-1546-D185	\$450	RS-2546-D185	\$480
30x4.0mm		50x4.0mm		100x4.0mm		150x4.0mm		250x4.0mm	
RS-0340-D185	\$370	RS-0540-D185	\$390	RS-1040-D185	\$420	RS-1540-D185	\$450	RS-2540-D185	\$480
30x3.0mm		50x3.0mm		100x3.0mm		150x3.0mm		250x3.0mm	
RS-0330-D185	\$370	RS-0530-D185	\$390	RS-1030-D185	\$420	RS-1530-D185	\$450	RS-2530-D185	\$480
30x2.1mm		50x2.1mm		100x2.1mm		150x2.1mm		250x2.1mm	
RS-0321-D185	\$370	RS-0521-D185	\$390	RS-1021-D185	\$420	RS-1521-D185	\$450	RS-2521-D185	\$480

## PROTO 300 Analytical Columns - Stainless Steel



<b>PROTO 300 C4 5µm</b>		<b>4.6, 4.0, 3.0, and 2.1mm I.D. s.s. columns</b>							
30x4.6mm		50x4.6mm		100x4.6mm		150x4.6mm		250x4.6mm	
RS-0346-W045	\$370	RS-0546-W045	\$390	RS-1046-W045	\$420	RS-1546-W045	\$450	RS-2546-W045	\$480
30x4.0mm		50x4.0mm		100x4.0mm		150x4.0mm		250x4.0mm	
RS-0340-W045	\$370	RS-0540-W045	\$390	RS-1040-W045	\$420	RS-1540-W045	\$450	RS-2540-W045	\$480
30x3.0mm		50x3.0mm		100x3.0mm		150x3.0mm		250x3.0mm	
RS-0330-W045	\$370	RS-0530-W045	\$390	RS-1030-W045	\$420	RS-1530-W045	\$450	RS-2530-W045	\$480
30x2.1mm		50x2.1mm		100x2.1mm		150x2.1mm		250x2.1mm	
RS-0321-W045	\$370	RS-0521-W045	\$390	RS-1021-W045	\$420	RS-1521-W045	\$450	RS-2521-W045	\$480

<b>PROTO 300 C18 5µm</b>		<b>4.6, 4.0, 3.0, and 2.1mm I.D. s.s. columns</b>							
30x4.6mm		50x4.6mm		100x4.6mm		150x4.6mm		250x4.6mm	
RS-0346-W185	\$370	RS-0546-W185	\$390	RS-1046-W185	\$420	RS-1546-W185	\$450	RS-2546-W185	\$480
30x4.0mm		50x4.0mm		100x4.0mm		150x4.0mm		250x4.0mm	
RS-0340-W185	\$370	RS-0540-W185	\$390	RS-1040-W185	\$420	RS-1540-W185	\$450	RS-2540-W185	\$480
30x3.0mm		50x3.0mm		100x3.0mm		150x3.0mm		250x3.0mm	
RS-0330-W185	\$370	RS-0530-W185	\$390	RS-1030-W185	\$420	RS-1530-W185	\$450	RS-2530-W185	\$480
30x2.1mm		50x2.1mm		100x2.1mm		150x2.1mm		250x2.1mm	
RS-0321-W185	\$370	RS-0521-W185	\$390	RS-1021-W185	\$420	RS-1521-W185	\$450	RS-2521-W185	\$480



## HPLC Columns (continued)

Wide Range of Stainless Steel HPLC COLUMNS



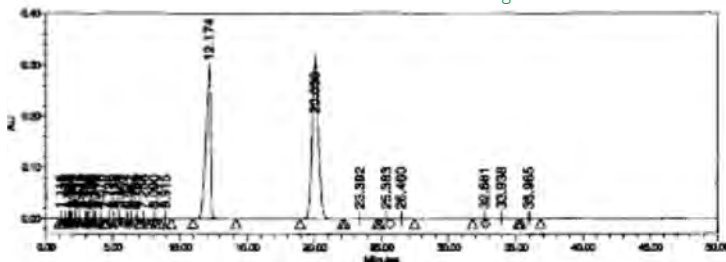
### PHALANX Analytical Columns - Stainless Steel

PHALANX C18 3µm		4.6, 4.0, 3.0, and 2.1mm I.D. s.s. columns							
30x4.6mm		50x4.6mm		100x4.6mm		150x4.6mm		250x4.6mm	
PS-0346-C183	\$460	PS-0546-C183	\$470	PS-1046-C183	\$530	PS-1546-C183	\$570	PS-2546-C183	\$600
30x4.0mm		50x4.0mm		100x4.0mm		150x4.0mm		250x4.0mm	
PS-0340-C183	\$460	PS-0540-C183	\$470	PS-1040-C183	\$530	PS-1540-C183	\$570	PS-2540-C183	\$600
30x3.0mm		50x3.0mm		100x3.0mm		150x3.0mm		250x3.0mm	
PS-0330-C183	\$460	PS-0530-C183	\$470	PS-1030-C183	\$530	PS-1530-C183	\$570	PS-2530-C183	\$600
30x2.1mm		50x2.1mm		100x2.1mm		150x2.1mm		250x2.1mm	
PS-0321-C183	\$460	PS-0521-C183	\$470	PS-1021-C183	\$530	PS-1521-C183	\$570	PS-2521-C183	\$600

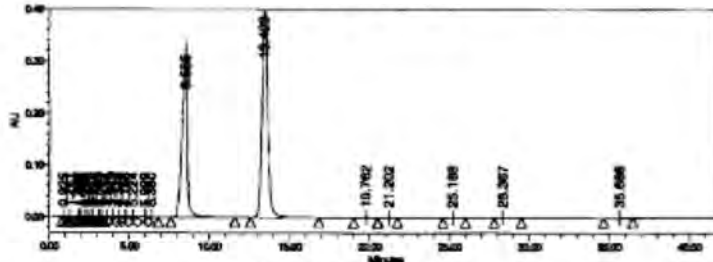
PHALANX C18 5µm		4.6, 4.0, 3.0, and 2.1mm I.D. s.s. columns							
30x4.6mm		50x4.6mm		100x4.6mm		150x4.6mm		250x4.6mm	
PS-0346-C185	\$370	PS-0546-C185	\$390	PS-1046-C185	\$420	PS-1546-C185	\$450	PS-2546-C185	\$480
30x4.0mm		50x4.0mm		100x4.0mm		150x4.0mm		250x4.0mm	
PS-0340-C185	\$370	PS-0540-C185	\$390	PS-1040-C185	\$420	PS-1540-C185	\$450	PS-2540-C185	\$480
30x3.0mm		50x3.0mm		100x3.0mm		150x3.0mm		250x3.0mm	
PS-0330-C185	\$370	PS-0530-C185	\$390	PS-1030-C185	\$420	PS-1530-C185	\$450	PS-2530-C185	\$480
30x2.1mm		50x2.1mm		100x2.1mm		150x2.1mm		250x2.1mm	
PS-0321-C185	\$370	PS-0521-C185	\$390	PS-1021-C185	\$420	PS-1521-C185	\$450	PS-2521-C185	\$480

### Comparison of PHALANX to Kromasil C18 for a Pharmaceutical Drug Analysis 150 X 4.6mm Columns, 1mL/min Linear Gradient for 50 minutes

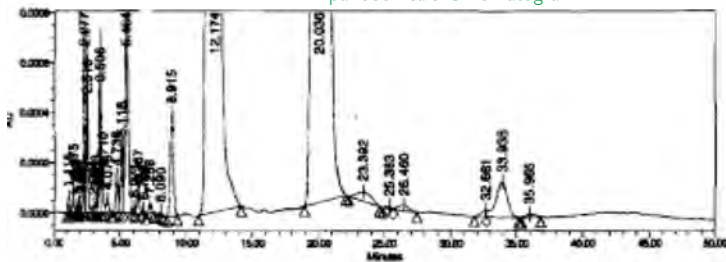
PHALANX Full Scale Chromatogram



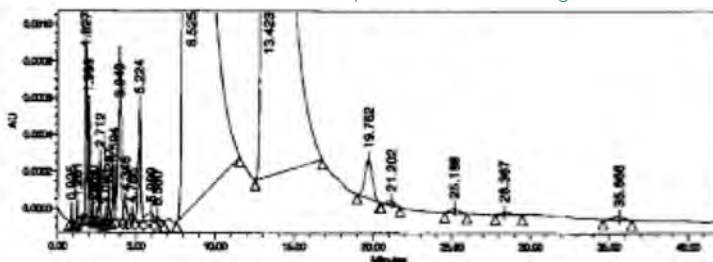
KROMASIL C18 Full Scale Chromatogram



PHALANX Expanded Scale Chromatogram



KROMASIL C18 Expanded Scale Chromatogram



Higgins Analytical thanks Amos Heckendorf of The Nest Group ([www.nestgrp.com](http://www.nestgrp.com)) for these data.



See pages 62 - 63 for information on the wide variety of Guard Cartridges available for these Analytical Columns

**TARGA Analytical Columns - Stainless Steel**



<b>TARGA C8 5µm</b>		<b>4.6, 4.0, 3.0, and 2.1mm I.D. s.s. columns</b>							
30x4.6mm		50x4.6mm		100x4.6mm		150x4.6mm		250x4.6mm	
TS-0346-C085	\$350	TS-0546-C085	\$360	TS-1046-C085	\$390	TS-1546-C085	\$420	TS-2546-C085	\$430
30x4.0mm		50x4.0mm		100x4.0mm		150x4.0mm		250x4.0mm	
TS-0340-C085	\$350	TS-0540-C085	\$360	TS-1040-C085	\$390	TS-1540-C085	\$420	TS-2540-C085	\$430
30x3.0mm		50x3.0mm		100x3.0mm		150x3.0mm		250x3.0mm	
TS-0330-C085	\$350	TS-0530-C085	\$360	TS-1030-C085	\$390	TS-1530-C085	\$420	TS-2530-C085	\$430
30x2.1mm		50x2.1mm		100x2.1mm		150x2.1mm		250x2.1mm	
TS-0321-C085	\$350	TS-0521-C085	\$360	TS-1021-C085	\$390	TS-1521-C085	\$420	TS-2521-C085	\$430

<b>TARGA C18 3µm</b>		<b>4.6, 4.0, 3.0, and 2.1mm I.D. s.s. columns</b>							
30x4.6mm		50x4.6mm		100x4.6mm		150x4.6mm		250x4.6mm	
TS-0346-C183	\$410	TS-0546-C183	\$450	TS-1046-C183	\$480	TS-1546-C183	\$510	TS-2546-C183	\$550
30x4.0mm		50x4.0mm		100x4.0mm		150x4.0mm		250x4.0mm	
TS-0340-C183	\$410	TS-0540-C183	\$450	TS-1040-C183	\$480	TS-1540-C183	\$510	TS-2540-C183	\$550
30x3.0mm		50x3.0mm		100x3.0mm		150x3.0mm		250x3.0mm	
TS-0330-C183	\$410	TS-0530-C183	\$450	TS-1030-C183	\$480	TS-1530-C183	\$510	TS-2530-C183	\$550
30x2.1mm		50x2.1mm		100x2.1mm		150x2.1mm		250x2.1mm	
TS-0321-C183	\$410	TS-0521-C183	\$450	TS-1021-C183	\$480	TS-1521-C183	\$510	TS-2521-C183	\$550

<b>TARGA C18 5µm</b>		<b>4.6, 4.0, 3.0, and 2.1mm I.D. s.s. columns</b>							
30x4.6mm		50x4.6mm		100x4.6mm		150x4.6mm		250x4.6mm	
TS-0346-C185	\$350	TS-0546-C185	\$360	TS-1046-C185	\$390	TS-1546-C185	\$420	TS-2546-C185	\$430
30x4.0mm		50x4.0mm		100x4.0mm		150x4.0mm		250x4.0mm	
TS-0340-C185	\$350	TS-0540-C185	\$360	TS-1040-C185	\$390	TS-1540-C185	\$420	TS-2540-C185	\$430
30x3.0mm		50x3.0mm		100x3.0mm		150x3.0mm		250x3.0mm	
TS-0330-C185	\$350	TS-0530-C185	\$360	TS-1030-C185	\$390	TS-1530-C185	\$420	TS-2530-C185	\$430
30x2.1mm		50x2.1mm		100x2.1mm		150x2.1mm		250x2.1mm	
TS-0321-C185	\$350	TS-0521-C185	\$360	TS-1021-C185	\$390	TS-1521-C185	\$420	TS-2521-C185	\$430

