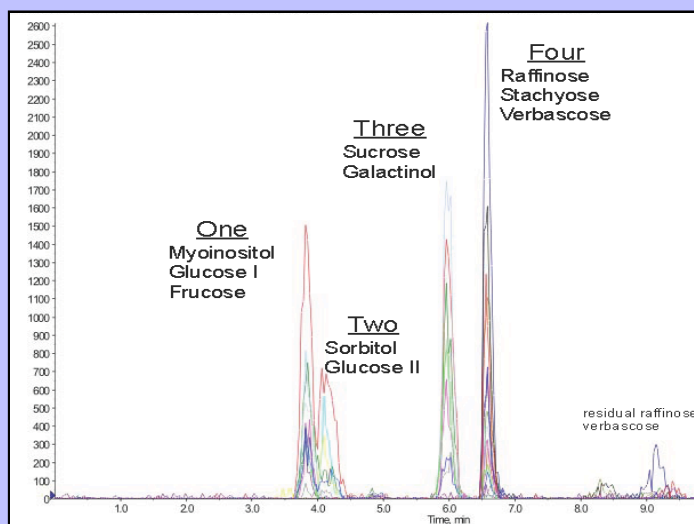


# Can Your Proteomics Column Retain Polar Analytes?

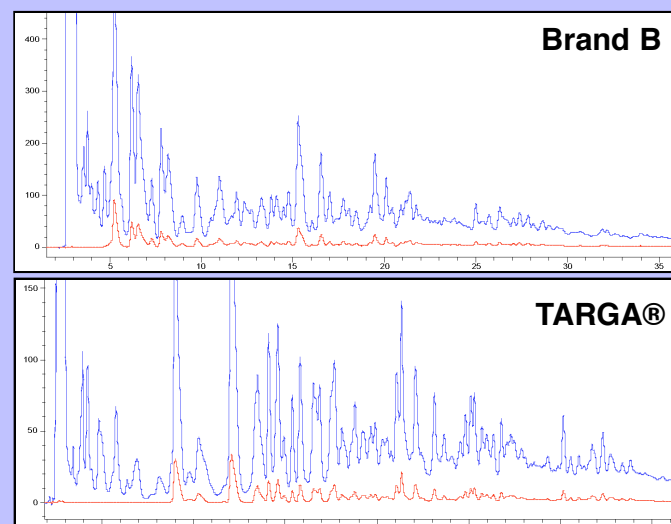
## Increased Resolution of Hydrophilic Analytes on TARGA C18

### RPC Separation of Saccharides



Column: TARGA C18, p/n: H TS-2546-C185  
Flow Rate: 1mL/min  
Solvent: 100% water. Detection: LC-MS

### Increased Separation of Polar Peptides



Column: TARGA C18, p/n: H TS-2546-C185  
Flow Rate: 1mL/min  
Gradient: 100% water, 0.1% FA to 60% ACN

Load Samples in 100% water  
Retain Polar Analytes for Increased Resolution  
10X Faster Equilibration in 100% Water for Shorter Cycle Times