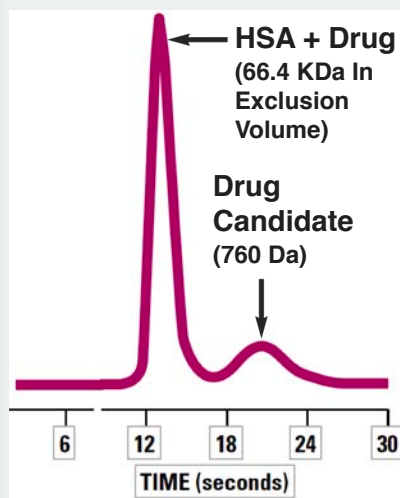


Drug-Protein Conjugate Screening

Fast SEC-RPC Columns:



- *Isolate conjugates in about 20 seconds.*
- *Use as little as 10 nM of sample.*
- *Separate conjugates from small solutes with a size exclusion limit of <1 KDa.*
- *Non-interactive even with weak binding constants.*
- *Couple to TARGA® columns for LC-MS.*

CONDITIONS

Column: PolyHYDROXYETHYL A™

2.1 x 35 mm

Mobile Phase: 50mM NaPO₄, pH 7.2
with 2% DMSO (v/v)

Flow Rate: 0.4 mL/min

Sample: 2 µL with 50 µM of each
solute

Data courtesy of Krishna Kalghargi
NeoGenesis Inc.

SEC

P051HY05006

1.0 x 50 mm, 5µm

P03.52HY05006

2.1 x 35mm, 5µm

P052HY05006

2.1 x 50mm, 5µm

RPC

TS-05M3-C185

0.3 x 50 mm, 5µm

TS-05M5-C185

0.5 x 50 mm, 5µm

TS-0501-C185

1.0 x 50 mm, 5µm



PolyHYDROXYETHYL A™ is a trademark of PolyLC, Inc.
TARGA® is a registered trademark of Higgins Analytical, Inc.