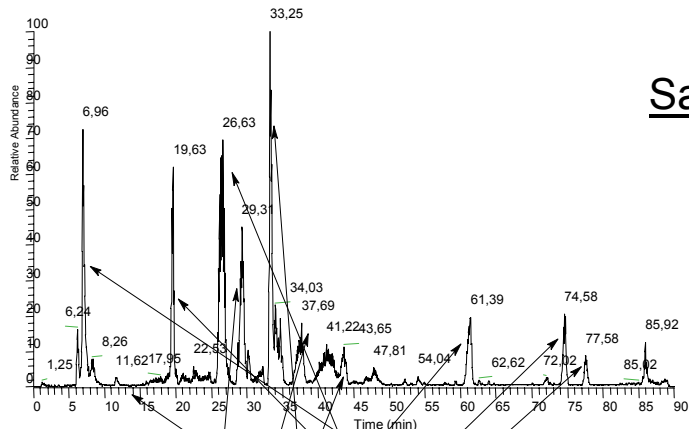


Arabidopsis thaliana leaf extract

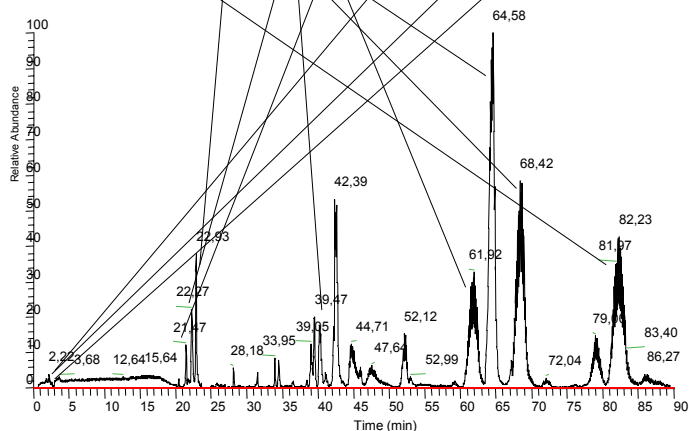
HILIC-ESI-MS with a **PolyHYDROXYETHYL A** capillary
 3 μm , 100 \AA , 150x0.32 mm Gradient: Decreasing ACN
 (Courtesy of V.V. Tolstikov, Max Planck Institute-Potsdam)

THE WORST-RETAINED SOLUTES IN REVERSED-PHASE ARE THE BEST-RETAINED IN HILIC!



Sample: *Arabidopsis thaliana*
leaf extract

HILIC mode: 3 μ m, 100 \AA
PolyHYDROXYETHYL A™



RPC mode: Capillary
of C-18 Hypersil®

(Courtesy of V. V. Tolstikov, Max Planck Institute-Potsdam)
