

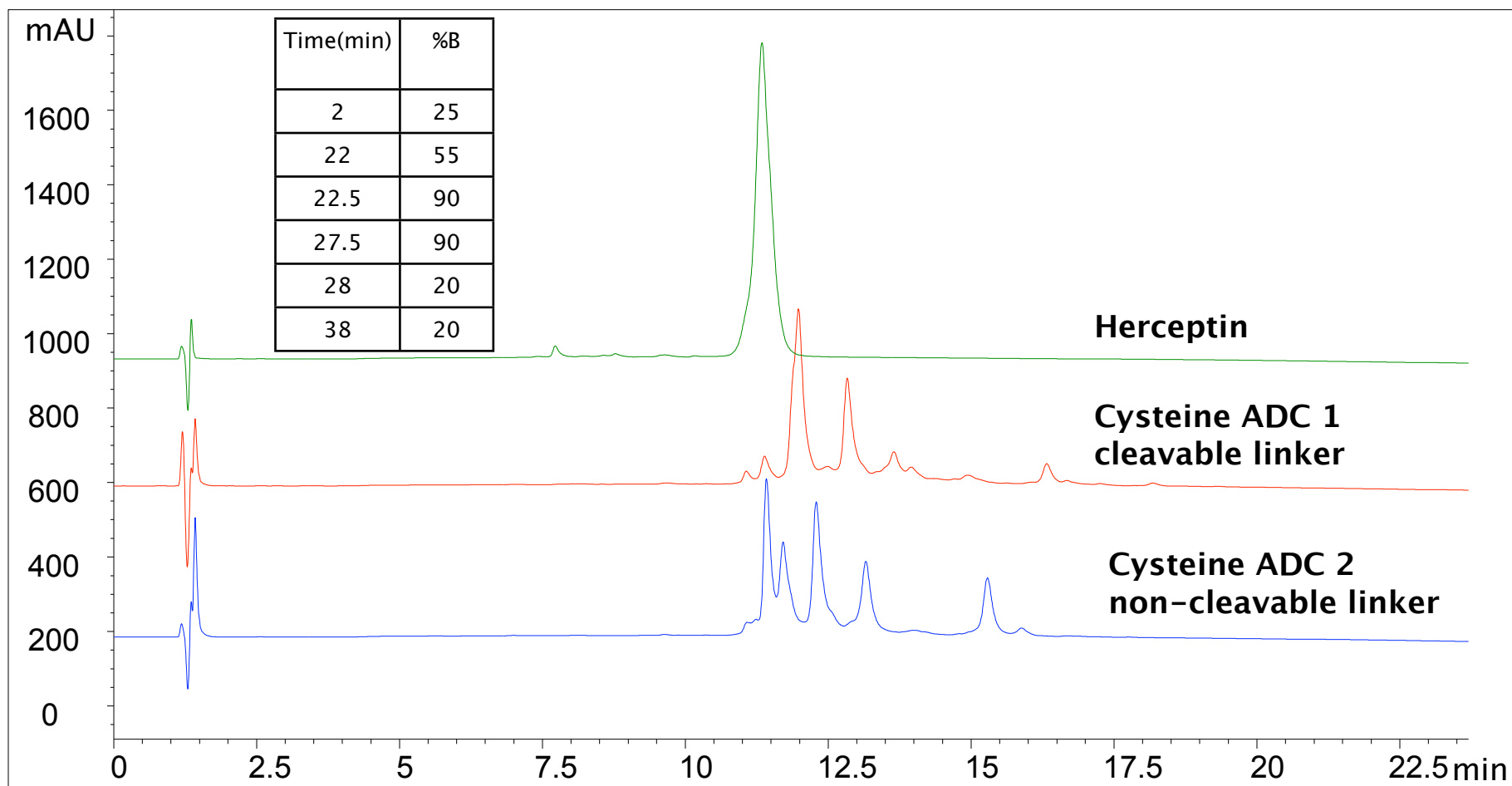
MAb Herceptin and its ADCs Separation on

Column: PolyRP-1000 (5 μm , 1000 \AA , 4.6 x 100 mm);

Mobile phase: A: 0.1% TFA in water; B: 0.1% TFA in 100% ACN;

Flow rate: 1.0 mL/min; Detector: UV 210 nm; Column temperature: 80 $^{\circ}\text{C}$;

Sample: Herceptin and ADCs 1 mg/mL diluted in 0.1% TFA; Injection volume: 10 μL



www.nestgrp.com

Better Surface Chemistry for Better Separation © Sepax

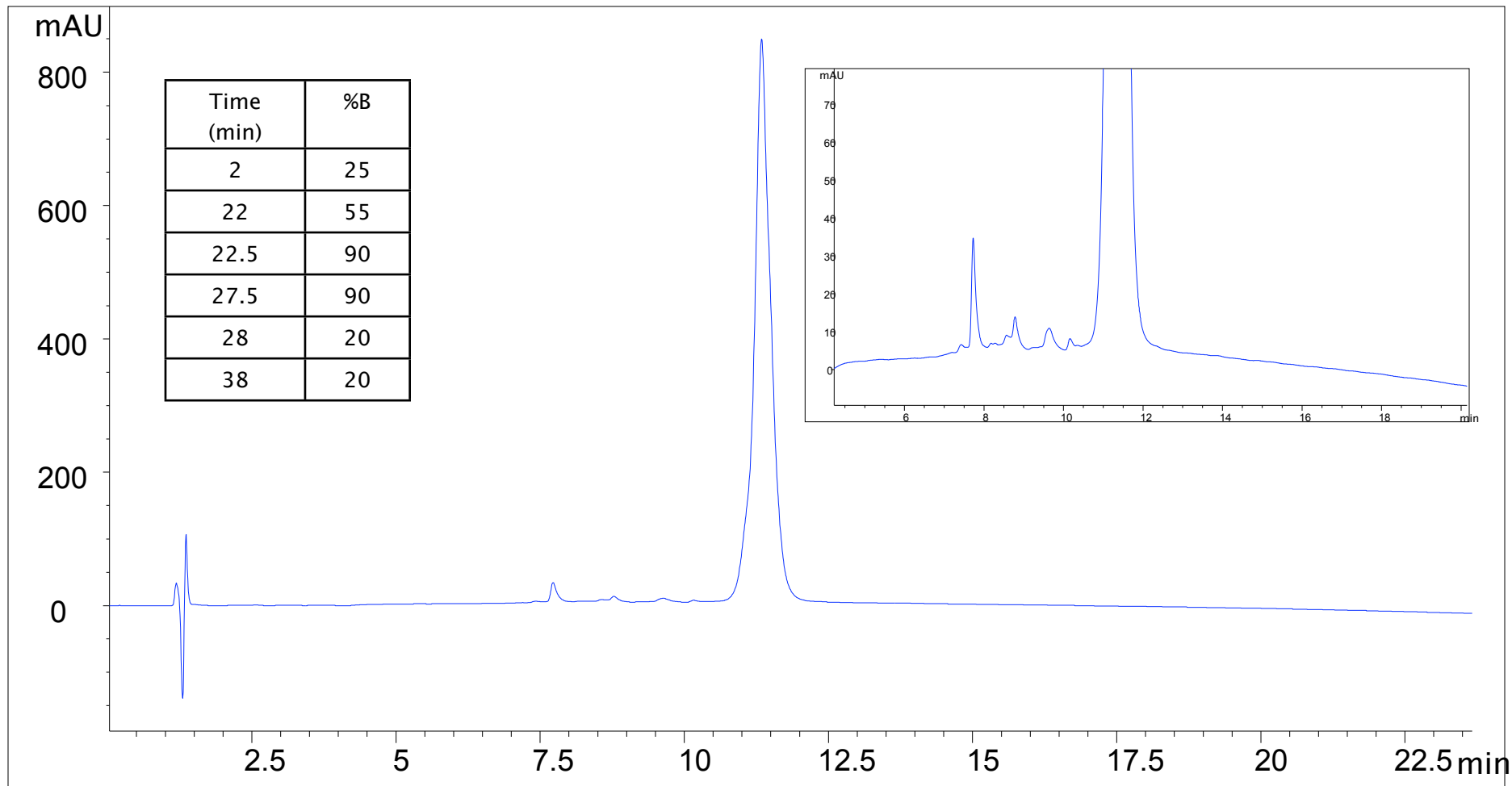
Monoclonal Antibody Herceptin Separation on

Column: PolyRP-1000 (5 μm , 1000 \AA , 4.6 x 100 mm);

Mobile phase: A: 0.1% TFA in water; B: 0.1% TFA in 100% ACN;

Flow rate: 1.0 mL/min; Detector: UV 210 nm; Column temperature: 80 $^{\circ}\text{C}$;

Sample: Herceptin 1 mg/mL diluted in 0.1% TFA; Injection volume: 10 μL



www.nestgrp.com

Better Surface Chemistry for Better Separation © Sepax

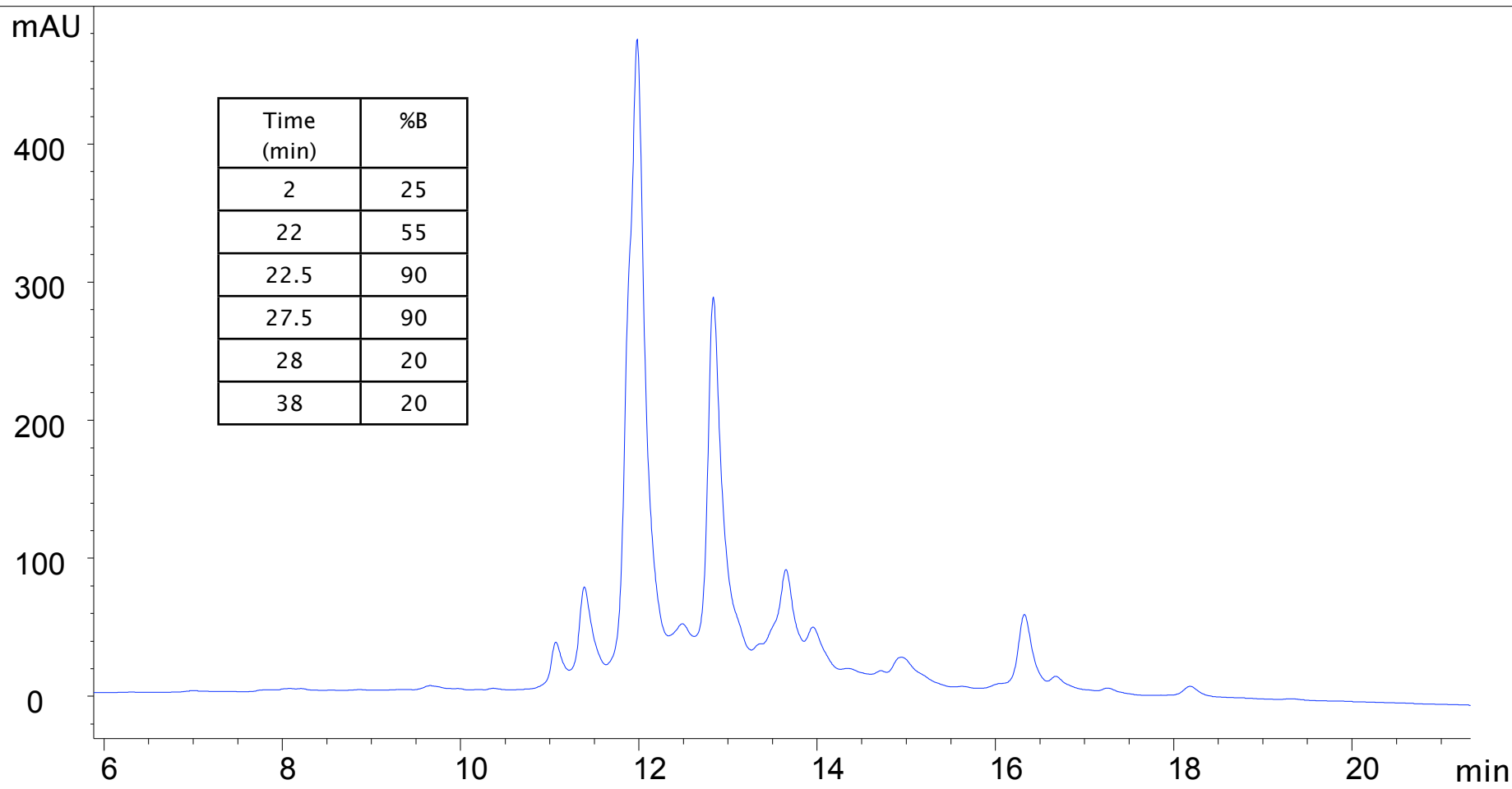
Herceptin-ADC 1 with Cleavable Linker Separation on

Column: PolyRP-1000 (5 μm , 1000 \AA , 4.6 x 100 mm); SN: 53198 ;

Mobile phase: A: 0.1% TFA in water; B: 0.1% TFA in 100% ACN;

Flow rate: 1.0 mL/min; Detector: UV 210 nm; Column temperature: 80 $^{\circ}\text{C}$;

Sample: Herceptin-ADC1 1 mg/mL diluted in 0.1% TFA; Injection volume: 10 μL



www.nestgrp.com

Better Surface Chemistry for Better Separation © Sepax

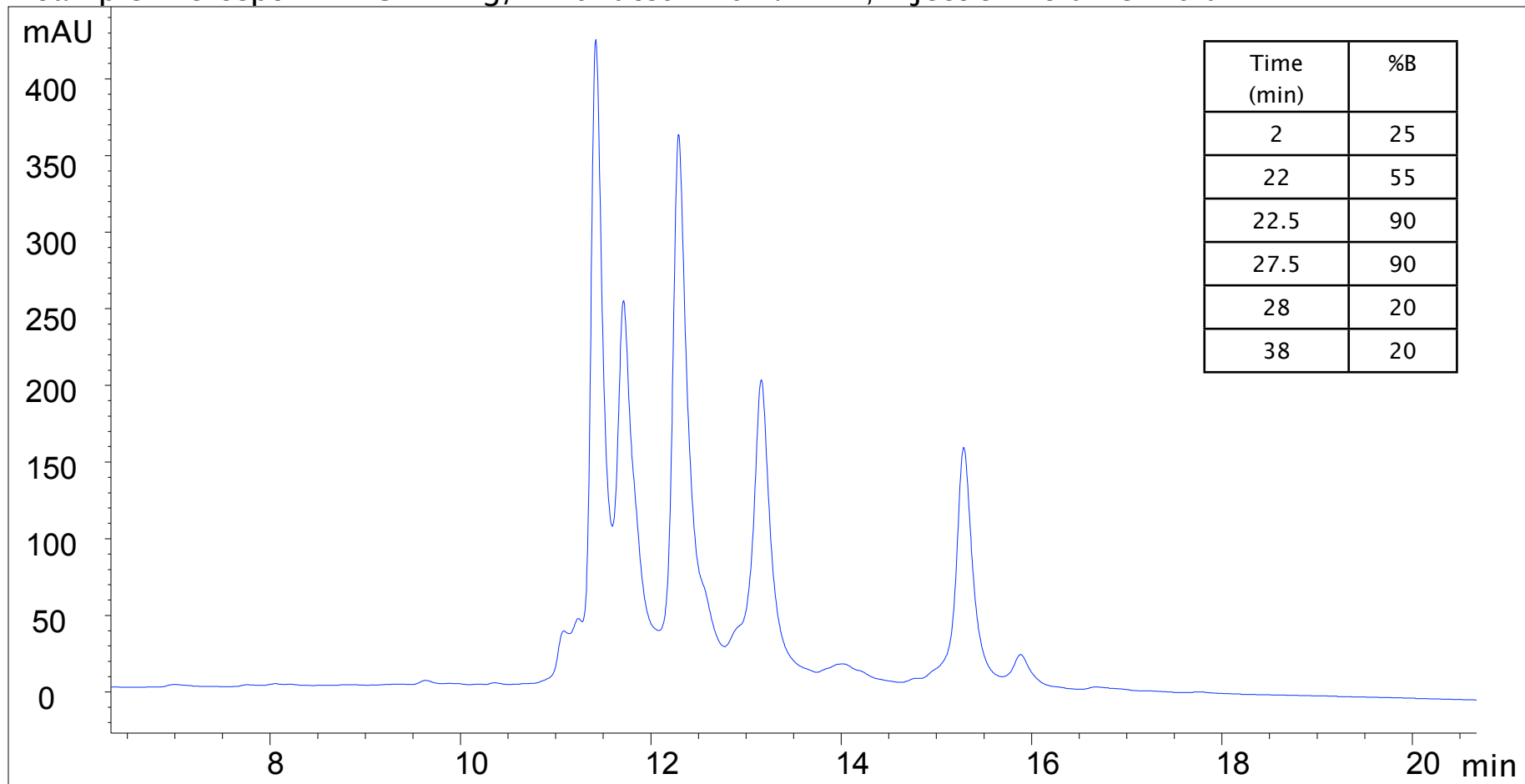
Herceptin-ADC 2 with Non-cleavable Linker Separation on

Column: PolyRP-1000 (5 μm , 1000 \AA , 4.6 x 100 mm);

Mobile phase: A: 0.1% TFA in water; B: 0.1% TFA in 100% ACN;

Flow rate: 1.0 mL/min; Detector: UV 210 nm; Column temperature: 80 $^{\circ}\text{C}$;

Sample: Herceptin-ADC2 1 mg/mL diluted in 0.1% TFA; Injection volume: 10 μL



www.nestgrp.com

Better Surface Chemistry for Better Separation © Sepax