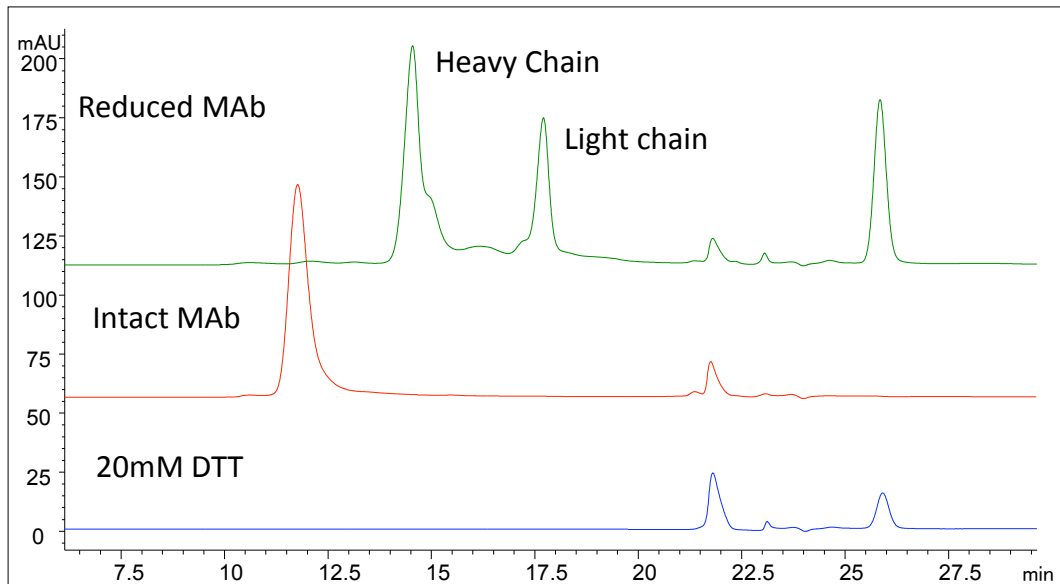




ZM1006

Monoclonal Antibody Heavy and Light Chain Separation on Zenix™ (7.8 x 300 mm)



Column:	Zenix™ -300 7830
Mobile phase:	0.1% TFA, 0.1% formic acid and 20% acetonitrile
Flow:	0.5mL/min
Detection:	UV 280nm
Injection volume:	20 µL
Sample:	Reduced monoclonal antibody (1 mg/mL) with 20 mM DTT

Keywords: Size exclusion, Zenix, proteins, pore size, monoclonal antibody, reduced monoclonal antibody, heavy chain, light chain, volatile mobile phase