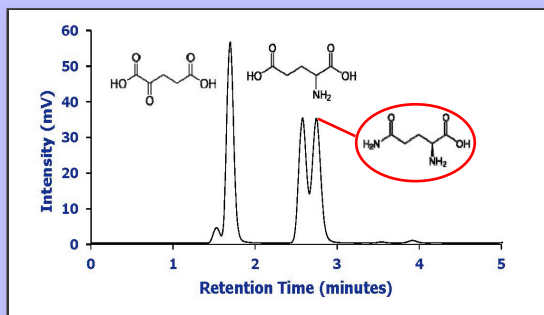


Organic Acid Test Probes for Evaluating Coulombic Effects of HILIC Stationary Phases

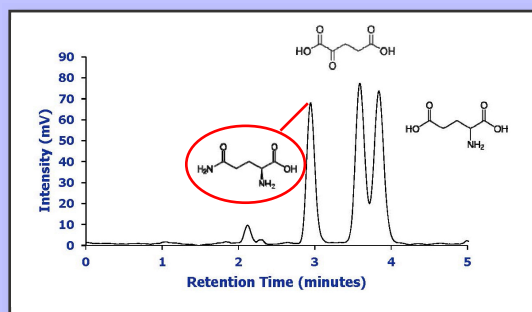
Tailoring Conditions to Increase Resolution of Hydrophilic Analytes

Selective Carboxyl Protonation by pH



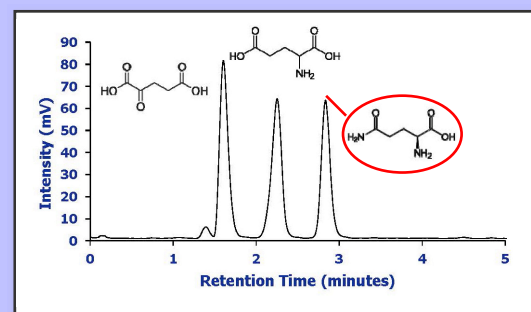
pH 3 <20mM

Ion Suppression by Buffer Strength



pH 6.8 >20mM

eHILIC Enhancement at Maximum Polarity



pH 6.8 <20mM

ZIC®-HILIC column (150 x 2.1 mm, 5 μ m, 200 Å), 30°C, 0.4 mL/min, 70% ACN and 30% buffer

Glutamine Elutes at a Consistent Retention Time
 α -Keto Glutaric Acid and Glutamic Acid are Sensitive to Coulombic Effects

