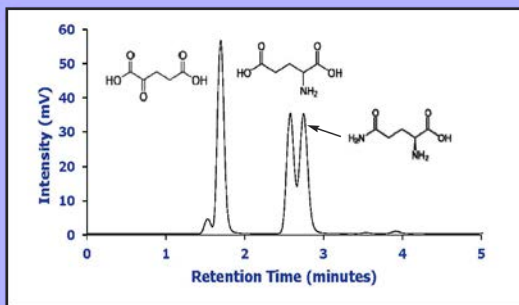


Enhancing Coulombic Effects On iHILIC[®] Stationary Phases

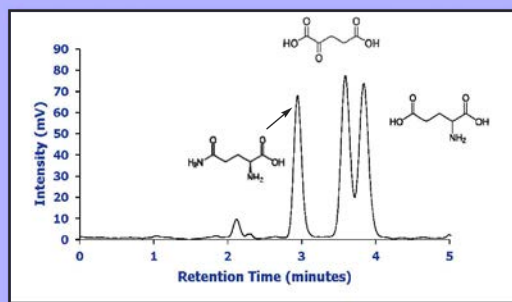
Tailoring Conditions to Increase Resolution of Hydrophilic Analytes

ERLIC With Partial Carboxyl Protonation



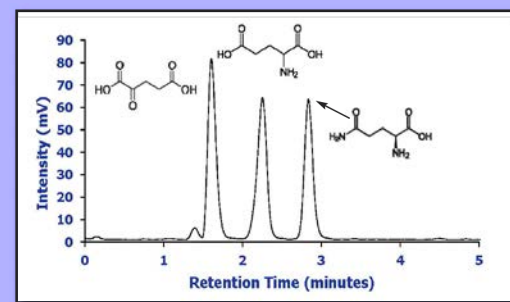
pH 3 <20mM

Ionic Shielding by Buffer Strength



pH 6.8 >20mM

Maximum Polarity ERLIC With Low Buffer



pH 6.8 <20mM

iHILIC[®]-P & iHILIC[®] Fusion (150 x 2.1 mm, 5 μm, 200 Å), 30°C, 0.4 mL/min, 70% ACN and 30% buffer

Glutamine Elutes at a Consistent Retention Time at a pH < 9
α-Keto Glutaric Acid and Glutamic Acid are Sensitive to Coulombic Effects

